



megaspin 820P / 820

HIGH PRECISION WHEEL BALANCER



megaspin 820P

megaspin 820P





Hofmann Megaplan wheel balancers are a concentrate of functionality and technology. Each model is the result of an in-depth analysis of the real needs of the market and ensures optimal results in terms of quality and efficiency.

17" monitor with digital control panel



megaspin 820

megaspin 820



megaspin



**AUTO
SENSE**

**AUTOMATIC
GAUGE**

Detection of wheel dimensions

The automatic gauge for distance and diameter measurement (rims up to 28") and the Auto Sense device for wheel width measurement allow an immediate and accurate detection of all necessary wheel parameters to correctly measure wheel imbalance.

In addition, with the Auto Select function, the machine automatically recognizes whether the rims are made of steel or alloy.



**LASER
POINT
ACCURACY
NO CHECKSPIN**

Laser pointer

During the correction phase, the laser pointer indicates the exact position for stick-on weights application inside the rim. Any possible error during the weight positioning is avoided thanks, also, to the electric brake, which locks the wheel into the exact correction position. The balancing procedure is further simplified by the LED light that illuminates the working space inside the rim.



**AVS
SONAR**

HUBMATCH

AVS Sonar (Optional)

Since the vibrations of a wheel often do not depend only on the imbalance, M820/ M820P can make an in-depth analysis of the run-out thanks to the Anti Vibration System (AVS). The AVS Sonar, during the normal balancing cycle, detects wheel eccentricity with a 0,1 mm accuracy and enables a precise diagnosis within seconds. HubMatch, the guided on-car eccentricity cancellation process, detects the highestpoint of the wheel to reduce the assembly eccentricity using hub bore clearance and gravity.



**OWB
ONE WEIGHT
BALANCING**

One Weight Balancing

One Weight Balancing is automatically activated, at the end of the spin, and suggests a single ideal correction plane instead of two. The laser pointer indicates the exact point where it is possible to balance the wheel minimizing both static and dynamic imbalance, using only one counterweight.

OWB offers 30% time savings for 70% of wheels.

Megaclamp - Pneumatic locking (M820P)

Pneumatic locking ensures perfect wheel centering on the spindle, reducing clamping time. M820 has the manual locking system.



Automatic approach

With the automatic approach system and the electric brake, once the measuring spin is completed, the wheel automatically stops near the exact point of application of the counterweight. The operator can position the wheel correctly with just a little movement. After the first plane is corrected, pressing "start" the wheel position itself around the second correction point.



Standard accessories



SE KIT

Ring, quick locking sleeve SE2, SE spacer

KIT GL40

Quick locknut GL40 with sleeve and ring



3 CONES KIT

Ø 45÷110 mm, pincer-hammer and 60 g counterweight



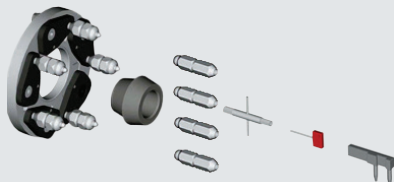
WIDTH GAUGE

Optional accessories



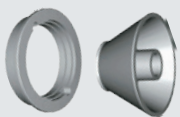
RL CUP Ø 40

Large plastic cup with rubber ring for alloy rims protection



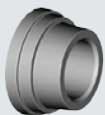
UH20/2 Ø 40

Universal adapter for wheels with 3,4,5,6 holes. Complete with back centering double cone for wheels with/without central holes



VL/2 CONE + G36 DISC

Kit for light truck wheels (Ø 97÷170 mm centre hole)



MT2 CONE Ø 40

Stepped cone for Porsche - Audi - Opel - Volkswagen - BMW - Smart (Ø56,5 / 57 / 66,5 / 72,5 mm centre hole)

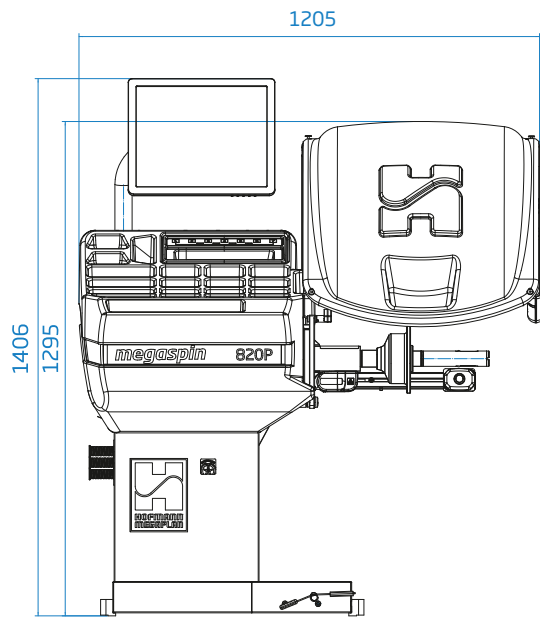
Versions on request

megaspin 820: manual locking

Version with Anti Vibration System for eccentricity measurement

megaspin 820P: pneumatic locking

Version with Anti Vibration System for eccentricity measurement



Technical Data

Single phase power supply	230V/1ph/50 hz
	115V/1ph/60 Hz
Max. absorbed power	0,15 kW
Balancing speed	100 rpm
Measurement spin time for 15 kg (33 lb) wheel	4.7 s
Measurement uncertainty	± 0,5 g
Resolution	0,5 g
Average noise	< 70 dB (A)
Rim width setting range	1.5" ÷ 20" / 40 ÷ 510 mm
Rim diameter setting range	10" ÷ 30" / 265 ÷ 765 mm
Min./Max. compressed air pressure	7 ÷ 10 kg/cm ² / ~ 0.7 ÷ 1 MPa
	~ 7 ÷ 10 bar / ~ 105 ÷ 145 psi
Max. wheel weight	< 75 kg
Machine weight	120 kg



OPTIONAL ZERO WEIGHT LIFT TO REDUCE ANY EFFORT

Professional automatic wheel lift with load capacity up to 80 kg.

Zero weight is quick and ensure the exact centring of the wheel.



HOFMANN MEGAPLAN GmbH

Hüttenstrasse 7 - 67550 Worms - Germany

T +49 (0)6242 913 6666 - hm-mail@hofmann-megaplan.com

www.hofmann-megaplan.com