



megaspin 22 bike

DIGITAL WHEEL BALANCER FOR MOTORBIKE WHEELS

**AUTOMATIC
GAUGE**



**MANUAL
LOCKING**



**AUTOMATIC
GAUGE**



**MANUAL
LOCKING**

Automatic gauge

The automatic gauge allows detecting automatically the distance and diameter of the wheel. In addition, with the Auto Select function, the machine automatically recognizes if you are in the presence of steel or alloy rims.

Spin and stop are carried out through the drive roller brought in contact with the tyre. For small diameter wheels, the spin can be carried out manually. M22 bike allows both static and dynamic balancing.

Spindle axis

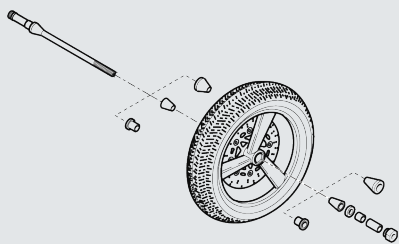
Thanks to the fixed spindle, the wheel can rotate freely on its own bearings, reproducing exactly the wheel assembly on the motorbike. In this way it is possible to eliminate any assembly inaccuracies which would be unavoidable when working on traditional car wheels balancing machines where the flange is put in rotation together with the wheel.

Manual locking

The wheel clamping is manual and the two standard flanges provided allow a quick and accurate locking for all types of wheels available on the market.

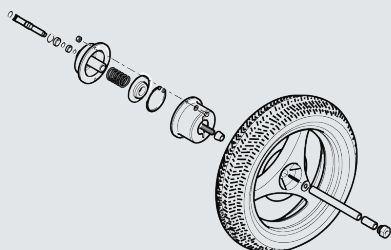
The flange AF15 allows assembling all wheels with bearings. The flange AGF allows operating both on motor-scooter wheels and on rear flanged or single-arm wheels.

Optional accessories



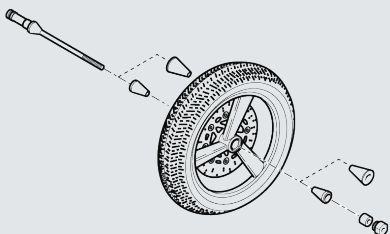
AF15 - Compulsory

For all types of wheels assembled on bearings with central hole $\varnothing 15+35$



AGF

For flanged wheels with centring up to $\varnothing 85$ mm



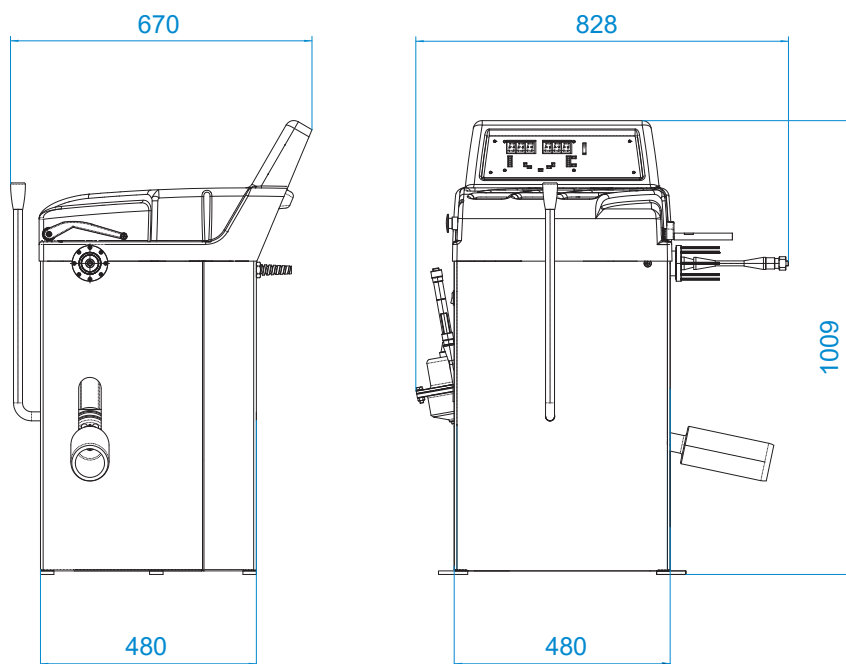
AF12

Spindle shaft with $\varnothing 11$ mm



AF19

For large wheels assembled on bearings with central hole $18+35$



Technical Data

Rim diameter setting range	265 - 765 mm (10" - 30")
Rim width setting range	40 - 510 mm (1.5" - 20")
Single phase power supply	115/230V - 50/60 Hz
Supply with battery	12 - 24 V DCO
Max. absorbed power	15 kW
Balancing speed	< 80 rpm
Measurement uncertainty	0,5 g
Measuring cycle	6-8 s
Net weight	84 kg
Packing dimensions	88x108x114h cm

megaspin22 bike



HOFMANN MEGAPLAN GmbH
Hüttenstrasse 7 - 67550 Worms - Germany
T +49 (0)6242 913 6666 - hm-mail@hofmann-megaplan.com
www.hofmann-megaplan.com