



# megamount 87

AUTOMATIC TYRE CHANGER  
WITH LOCKING CAPACITY  
UP TO 30"  
AND MOTOINVERTER

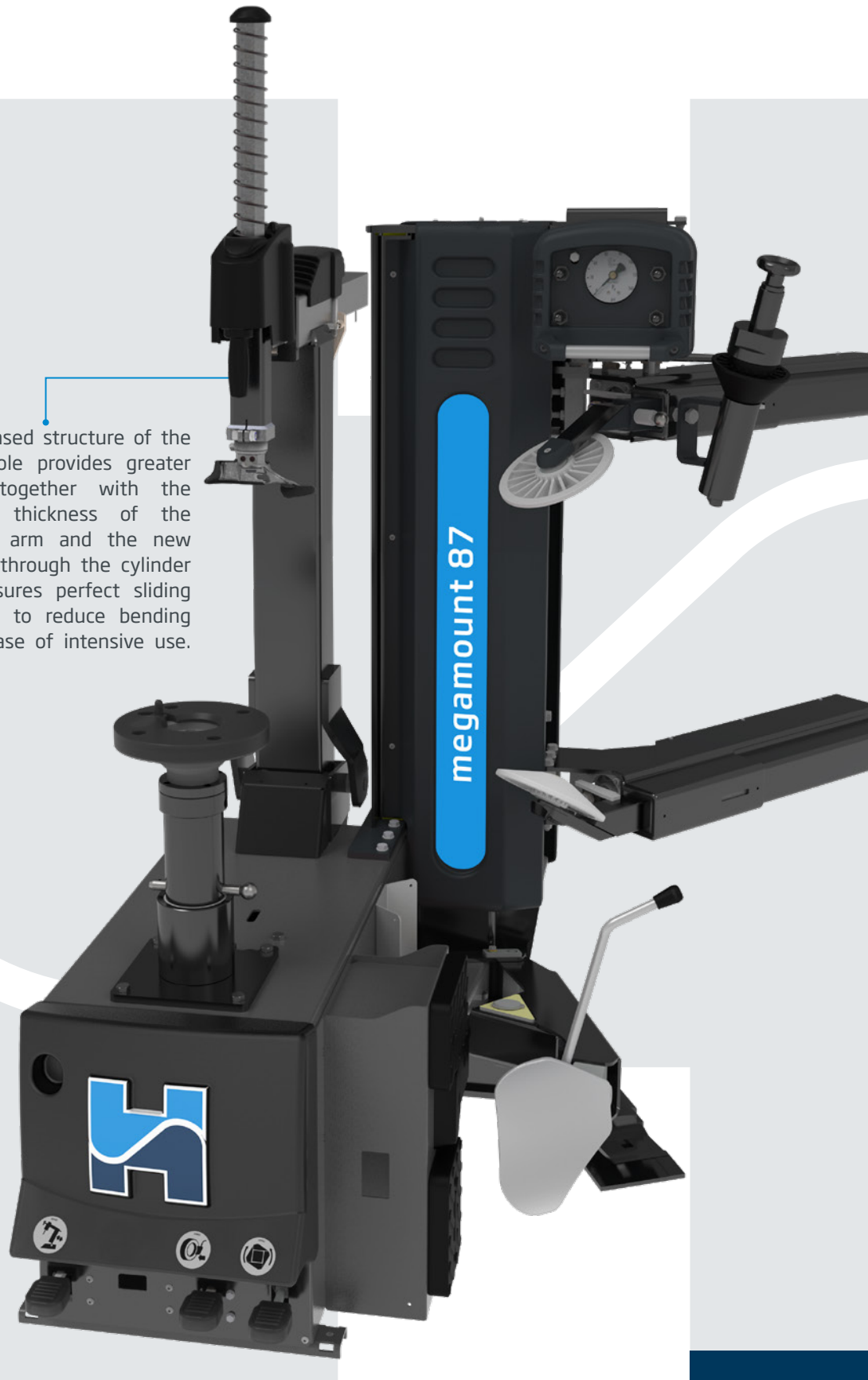




*The latest generation Hofmann Megaplan tyre disassembly tools allow the operator to work easily on all types of wheels. Key characteristics such as double bead removal, wheel clamping on backer pad and removable pedal unit are standard for this model.*

# megamount

The increased structure of the vertical pole provides greater stability together with the increased thickness of the horizontal arm and the new fastening through the cylinder which ensures perfect sliding and helps to reduce bending even in case of intensive use.



# megamount 87

AUTOMATIC TYRE CHANGER  
WITH LOCKING CAPACITY  
UP TO 30" AND MOTOINVERTER



UP to  
30"

## Locking capacity up to 30"

A height-adjustable backer pad system offers a wide clamping capacity from 10" to 30" and ensures optimal clamping on all types of rims, reducing the risk of damaging them. The rubber support plane also allows reverse rims to be clamped directly on the plate.



"COMBI"  
SYSTEM

## Combined bead removal system

This system uses two different bead removal tools to meet all needs. With ergonomic bead removal tool with adjustable arm to operate on standard and high profile wheels up to 17" wide; through dynamic discs activated by comfortable controls to manage their up/down, forward/backward and combined movements, to work on low profile, RFT and UHP wheels.

## Motoinverter

Motor controlled by Motoinverter system with progressive variation of speed from 0 to 16 rpm. The inverter board is installed away from the engine to overcome vibration and heat problems. Low power consumption at rest with the intelligent stand-by.



## Pedal operated inflating device

Pedal-operated inflating system, manometer and CE-certified inflation pressure limiter.



## HELPING DEVICE SYSTEMS

In order to make the *Megamount 87* even more functional, it is possible to choose the configuration with HPX-FA helper arm. Useful to facilitate the assembly/disassembly of the upper bead of UHP and Run-flat wheels.



## Standard accessories



Rubber protection for self centering device



Front head protection (x2)



Rear head protection (x2)

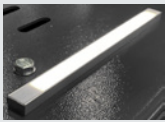
## Optional accessories



Wheel lift



Special adaptor for light trucks and rims with protruding spokes



Led power supply kit



Tubeless inflation system



Roller board



Extendable bead-pusher with pulling system



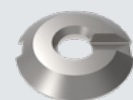
Flange kit for reversed rims



Tool holder

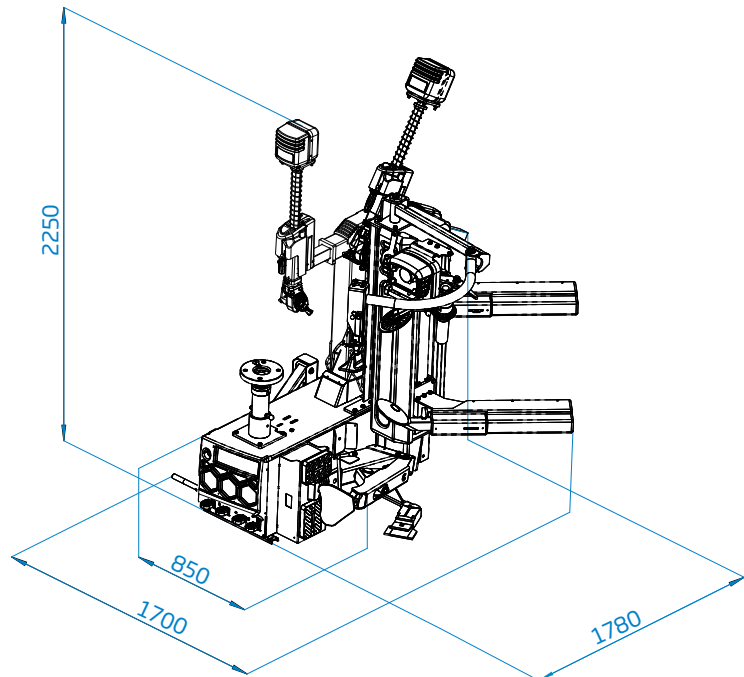


Spacer for light truck wheels



Cone for light truck wheels

**Single speed version: 1.5 kW 230V/50-60 Hz/1ph (Inverter) 0-16 rpm**



## Technical Data

Clamping capacity	10" ÷ 30" (min ÷ max)
Max wheel diameter	1160 mm (46")
Max wheel width	430 mm (17")
Bead breaker force	1200+1200 kgf (with discs) 2800 kgf (with blade)
1-Phase motor	1.5 kW (Inverter) 230V 50-60Hz
Turntable speed	0 - 16 rpm (1ph - Inverter)
Operating pressure	8 - 12 bar (116 - 145 psi)
Noise level	< 70 ± 3 dB (A)
Net weight	410 kg



**HOFMANN MEGAPLAN GmbH**  
Hüttenstrasse 7 - 67550 Worms - Germany  
T +49 (0)6242 913 6666 - hm-mail@hofmann-megaplan.com  
[www.hofmann-megaplan.com](http://www.hofmann-megaplan.com)