



# megamount RENOVA

TYRE CHANGER WITH  
***EASY DYNAMIC  
LEVERLESS  
SYSTEM***

**EASY  
DYNAMIC  
LEVERLESS**

**UP to  
30"**

**BEAD  
BREAKING  
DISCS**

**BEAD  
PUSHING  
ARM**





*Latest generation super-automatic tyre changer with a simplified leverless system suitable for wheel diameters up to 30". The particular combination between two different tools and the movement in two directions reduce the stress on the tyre and the risk of scratching the rim, allowing to work safely and without the use of any additional tools, with a subsequent reduction in time and effort.*

Additional bead pressing arm that moves together with the tyre to facilitate assembly operations in the case of UHP or Run-flat wheels



Functional and intuitive control console for optimal control of all work tools. Guarantees perfect ergonomics in movements and allows the operator to select the various functions with only one hand. By pressing some combined buttons all the working tools automatically retract to speed up the wheel unloading operation

**MOUNTING  
TOOL**

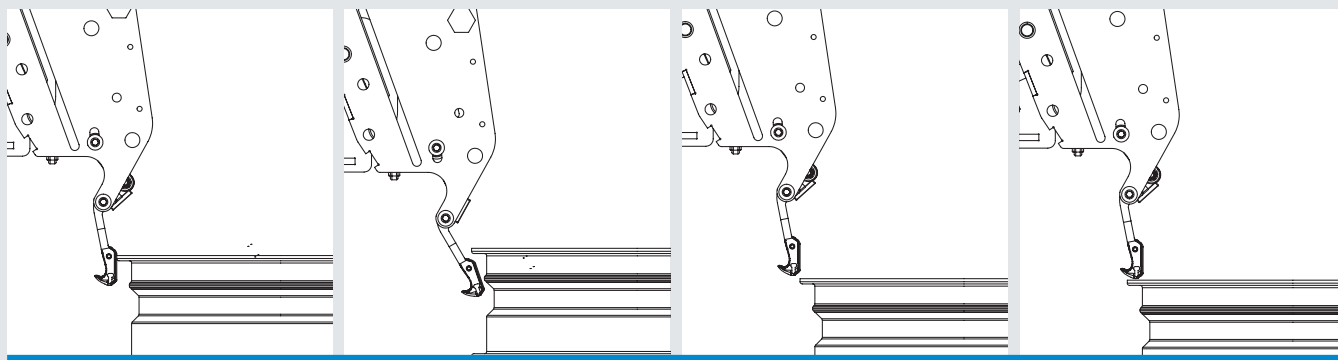
**DISMOUNTING  
LEVER TOOL**

**EASY  
DYNAMIC  
LEVERLESS**

## **PATENTED**

### **Contact-free easy dynamic leverless system**

Renova uses an absolutely innovative leverless assembly/disassembly system. The unique combination of two different tools and their movements in two directions (axial and radial) simplify the work to the maximum. The lever tool lowers to engage the bead, extracts it from the rim with extreme precision thanks to the special claw shape at its end, and keeps it locked until the bead-breaking operation is complete. A dedicated button activates the lowering of the mounting device, which, through a linear movement, perfectly aligns with the dismounting lever, becoming a guide that eases the installation of the first bead. All this without any pressure that could damage the tyre and avoiding any contact with the rim (contact-free).



### **Combined bead removal with discs**

Combined bead removal thanks to the movement of the two disc arms. The lower disc is always aligned with the assembly/disassembly tool. The upper disc is always tangent to the rim centre. The disc supports are produced using a micro-casting process, providing outstanding strength and long-term durability. Dedicated pushbuttons allow having full control of the penetration progress of the discs, while the solidity of the frame in which the lower disc arm is located allows exerting more effective pressure when removing the bead of particularly difficult tyres.



### **Locking capacity up to 30"**

Self-centring locking device with translational movement. The cast iron structure guarantees an extraordinary sturdiness, such as to withstand any stress without suffering any damage. The tightening is optimal on any type of rim up to 30" and ensures maximum safety when working.

### **Motoinverter**

Motor controlled by Motoinverter system with progressive variation of speed from 0 to 16 rpm. The inverter board is installed on the machine, away from the engine to overcome vibration and heat problems. Low power consumption at rest with the intelligent stand-by. High reliability and protection, with automatic alarm reset bringing the pedal to the resting position (no power outages required).



### **Pedal operated inflating device**

Pedal-operated inflating system, manometer and CE-certified inflation pressure limiter (4.2 bar/60PSI).



## Standard accessories



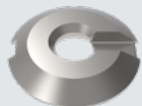
Protections for self centering device, pin to work with reversed rim

## Optional accessories



Fourth lower arm

Laser pointer that facilitates the correct positioning of the tools according to the diameter of the rim



Light transport cone



Light transport adapter

### Wheel lift

Extremely useful lift for lifting and centring even the heaviest wheel in the working position, ensuring perfect alignment between the centre of the rim and the centre of the self-centring device in every phase.

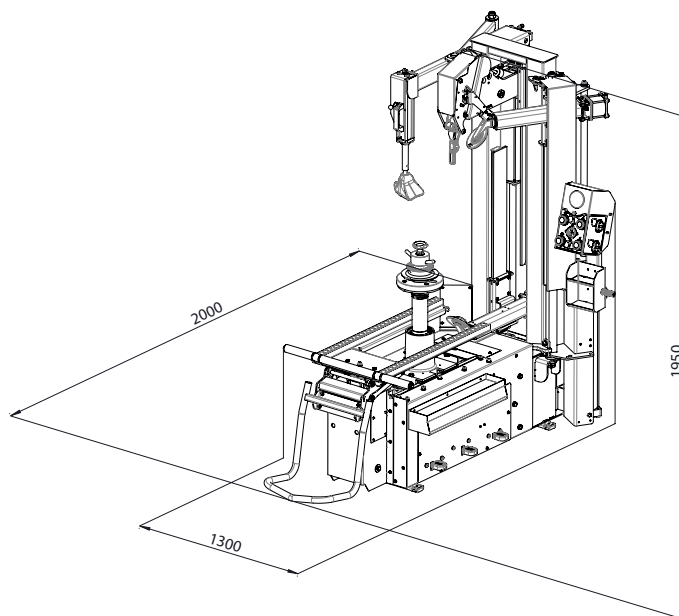
The operator controls the movement with a single pedal with continuous action, without any effort.



### Inflation Kit



External air jet inflation device for tubeless tyres; it facilitates the quick beading of any wheel and can be fixed on the machine for greater ease of use



## Technical Data

Clamping capacity	10" ÷ 30" (min ÷ max)
Max wheel diameter	1200 mm / 47"
Max wheel width	380 mm / 15"
Bead breaker force	12000N
1-Phase motor	1.5 kW (Inverter) 230V 50-60Hz
Turntable speed	0 - 16 rpm (1ph - Inverter)
Operating pressure	8 - 10 bar (116 - 145 psi)
Noise level	< 70 ± 3 dB (A)
Net weight	370 kg



# WHEEL LIFT



**HOFMANN MEGAPLAN GmbH**  
Hüttenstrasse 7 - 67550 Worms - Germany  
T +49 (0)6242 913 6666  
hm-mail@hofmann-megaplan.com  
[www.hofmann-megaplan.com](http://www.hofmann-megaplan.com)

AGHS35120