



megaspin FT Lite

VERSATILE BALANCING
MACHINE FOR **BALANCING**
WHEREVER YOU NEED IT





*Hofmann megaspin FT Lite is the new fully automatic balancing machine ideal for mobile service, but particularly suitable for workshops with space constraints, due to its extremely small size. **Megaspin FT Lite is light, compact and flexible to balance wherever you need.***

megaspin



Fast Touch Technology: wheel balancing for everyone

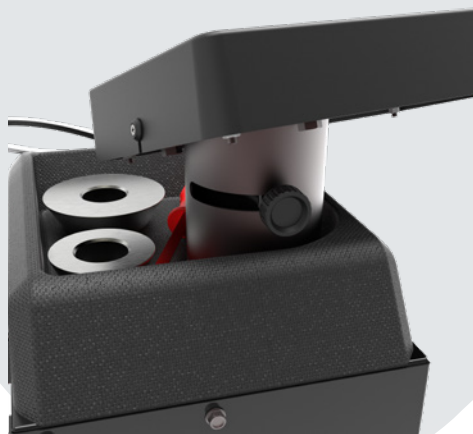
Once the dimensions of the wheel are detected, a simple press of a button speeds up the transmission of data to the software, which stores them before initiating the imbalance measurement.



In the absence of the traditional gauge, the operator is no longer forced to assume uncomfortable positions to acquire dimensions inside the rim, overall improving work comfort, performance, and efficiency.



Intuitive user interface for easy use.



Rotating display:

a convenient knob at the rear allows the operator to rotate and secure the interface in the preferred working position. It allows also to occupy the minimum space possible when the balancing machine is not in use.



Motorcycle automatic balancing:

when the appropriate accessories are fitted, press the dedicated pushbutton to automatically set the optimum balancing program for motorcycle wheels.



The revolution in wheel balancing

Megaspin Fast Touch revolutionizes the wheel balancing experience through the innovative combination of a laser point and a line laser.

With the simple movement of the wheel, the lasers calculate distance and diameter of the rim, while the VIRTUAL SONAR measures its width, enabling the rapid and precise detection of all parameters necessary to accurately identify wheel unbalance. Subsequently, the laser pointer also indicates the exact position for the application of adhesive counterweights inside the rim.

Any potential errors during the weight placement are avoided thanks to the electric brake, which immediately locks the wheel in the correction position.



Virtual Sonar

Virtual Sonar is a software able, in the absence of an actual sonar device, to automatically measure the width of steel rims and, therefore, to calculate the position of the second correction plane.

Virtual Sonar reduces balancing time by avoiding operator errors caused by manual data entries and guarantees, at the same time, a balancing efficiency.



One Weight Balancing

One Weight Balancing is automatically activated, at the end of the spin, and suggests a single ideal correction plane instead of two. The laser pointer indicates the exact point where it is possible to balance the wheel minimizing both static and dynamic imbalance, using only one counterweight.

OWB offers 30% time savings for 70% of wheels.

Automatic approach

With the automatic approach system and the electric brake, once the measuring spin is completed, the wheel automatically stops near the exact point of application of the counterweight. The operator can position the wheel correctly with just a little movement. After the first plane is corrected, pressing "start" the wheel position itself around the second correction point.



STANDARD VERSION



Version with minimal size to secure to a workbench with two support brackets (ideal for both workshop and for mobile service)

VERSIONS ON REQUEST



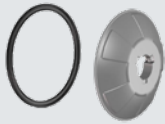
Version with baseplate for mobile service for easy installation on a van



Version with baseplate for installation in workshops with limited space

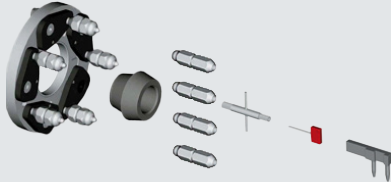
Baseplate with very small dimensions. Compared to a standard balancing machine, it is 3 times more compact and up to 4 times lighter.

Optional accessories



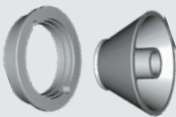
RL CUP Ø 40

Large plastic cup with rubber ring for alloy rims protection



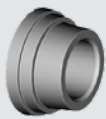
UH20/2 Ø 40

Universal adapter for wheels with 3, 4, 5, 6 holes. Complete with back centering double cone for wheels with/without central holes



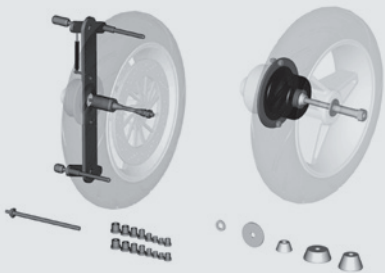
VL/2 CONE + G36 DISC

Kit for light truck wheels (Ø 97 ÷ 170 mm centre hole)



MT2 CONE Ø 40

Stepped cone for Porsche - Audi - Opel - Volkswagen - BMW - Smart (Ø56,5 / 57 / 66,5 / 72,5 mm centre hole)



RMC20/mot/2

Universal centering adapter for motorcycles and scooter wheels.
For flanged wheels and scooter wheels: high precision back centering cone.
For wheels with bearing (inner hole Ø 15 ÷ 35 mm): haulage arm dynamically balanced

WHEEL KIT

Kit di 2 wheels and screws for baseplate

Standard accessories



GLM40 KIT

Quick locknut with handwheel GLM40, sleeve and ring

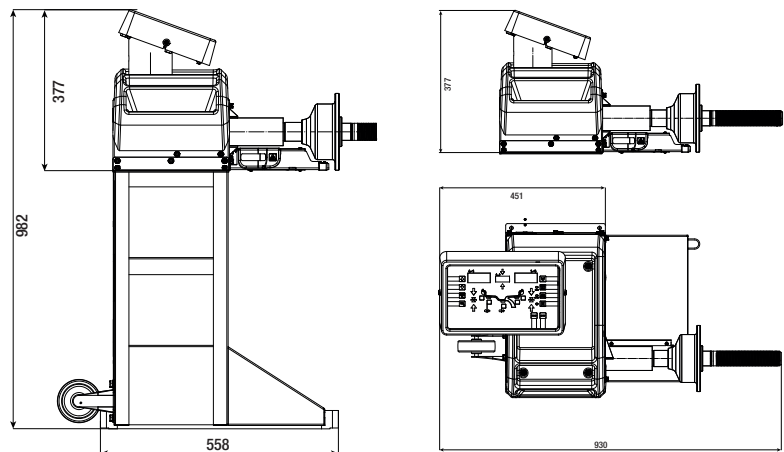


3 CONES KIT + width gauge

Ø 45 ÷ 110 mm, pincer-hammer and 60 g counterweight

Versions on request

Motoinverter Version: DC/AC inverter, 12V, 200-240VAC, 450W



Technical Data

Single phase power supply	230V/1ph/50-60 Hz
	115V/1ph/50-60 Hz
Max. absorbed power	0,65 kW
Balancing speed	100 rpm
Measurement spin time for 15 kg (33 lb) wheel	4,7 s
Measurement uncertainty	± 1 g
Resolution	1 g
Average noise	< 70 dB (A)
Rim width setting range	1,5" ÷ 20" / 40 ÷ 510 mm
Rim diameter setting range	10" ÷ 30" / 265 ÷ 765 mm
Max. wheel weight	< 75 kg
Machine weight	30 kg



HOFMANN MEGAPLAN GmbH
Hüttenstrasse 7 - 67550 Worms - Germany
T +49 (0)6242 913 6666
hm-mail@hofmann-megaplan.com
www.hofmann-megaplan.com